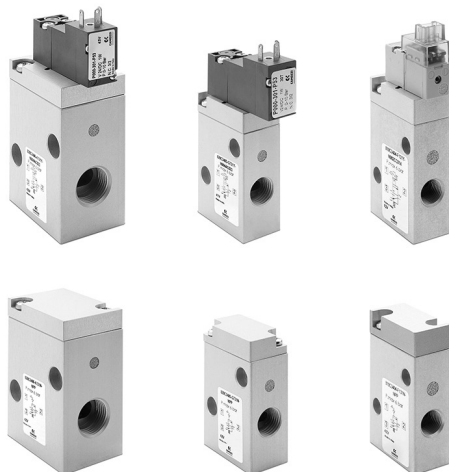


# Elettrovalvole e valvole a comando pneumatico Serie 8

2/2 vie - Normalmente Chiusa (NC), Normalmente Aperta (NO)  
3/2 vie - Normalmente Chiusa (NC), Normalmente Aperta (NO)



- » Alta portata
- » Disponibile in 3 taglie per usi generali
- » Disponibile versione per utilizzo con ossigeno

La Serie 8 amplia la gamma di modelli disponibili offrendo ora la valvola a cartuccia inserita direttamente in un corpo di alluminio anodizzato e completo dell'elettrovalvola pilota.

I nuovi corpi consentono di avere modelli a comando pneumatico con pilotaggio esterno oppure modelli a comando elettropneumatico con pilotaggio sia esterno che interno.

## CARATTERISTICHE GENERALI

### SPECIFICHE TECNICHE

Funzione	2/2 NC - 2/2 NO - 3/2 NC - 3/2 NO
Azionamento	pneumatico o elettropneumatico
Connessioni pneumatiche	G1/8 - G1/4 - G3/8
Diametro nominale	5 ... 9 mm
Coefficiente di flusso kv (l/min)	6.5 ... 23
Portata nominale	420 ... 1480 NL/min (aria a 6 bar ΔP 1 bar)
Pressione di esercizio	3 ÷ 6 bar (0 ÷ 6 bar con pilotaggio esterno)
Pressione di pilotaggio esterna	3 ÷ 6 bar
Temperatura di esercizio	0 ÷ +50°C
Fluido	aria filtrata classe 5.4.4 secondo ISO 8573-1 (viscosità olio max. 32 cSt), gas inerti
Tempi di risposta	ON <10 msec - OFF <10 msec
Installazione	in qualsiasi posizione

### MATERIALI IN CONTATTO CON IL FLUIDO

Corpo	Alluminio
Tenute	FKM
Parti interne	Alluminio - Ottone

### SPECIFICHE ELETTRICHE

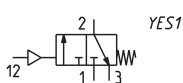
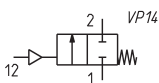
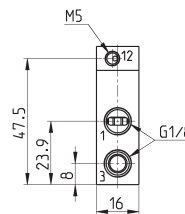
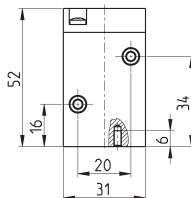
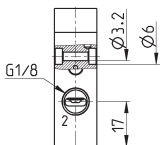
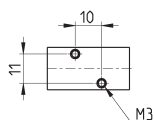
Tensione	24 V DC - altre tensioni a richiesta
Tolleranza tensione	Taglia 1 = ±10% - Taglia 2 e 3 = -10% +15%
Potenza assorbita	Taglia 1 = 1.3 W (spunto) 0.25 W (mantenimento) - Taglia 2 e 3 = 2 W
Servizio continuo	ED 100%
Connessione elettrica	a connettore - cavetti L = 300 mm
Grado di protezione	Taglia 1 = IP50 - Taglia 2 e 3 = IP65 (con connettore)

**ESEMPIO DI CODIFICA**

<b>8</b>	<b>10</b>	<b>C3</b>	<b>4</b>	<b>04</b>	<b>-</b>	<b>F1</b>	<b>3</b>	<b>1</b>	<b>Y</b>	<b>-</b>	<b>N</b>	<b>00</b>	<b>2C</b>	<b>C014</b>	
----------	-----------	-----------	----------	-----------	----------	-----------	----------	----------	----------	----------	----------	-----------	-----------	-------------	--

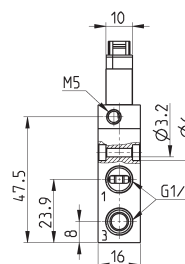
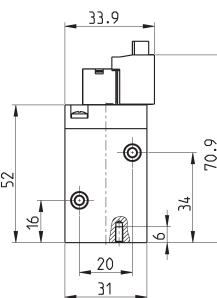
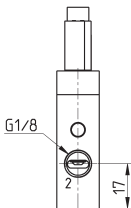
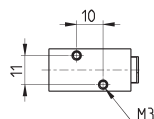
<b>8</b>	SERIE
<b>10</b>	TAGLIA: 10 = Taglia 1 20 = Taglia 2 30 = Taglia 3
<b>C3</b>	ESECUZIONE CORPO: C3 = corpo filettato
<b>4</b>	NUMERO VIE - FUNZIONI: 1 = 2/2 vie NC 2 = 2/2 vie NO 4 = 3/2 vie NC 5 = 3/2 vie NO
<b>04</b>	CONNESSIONI PNEUMATICHE: 04 = G1/8 (Taglia 1) 05 = G1/4 (Taglia 2) 06 = G3/8 (Taglia 3)
<b>F1</b>	DIAMETRO NOMINALE: F1 = 5.0 mm (Taglia 1) G7 = 6.6 mm (Taglia 2) K1 = 9.0 mm (Taglia 3)
<b>3</b>	MATERIALI TENUTE: 3 = FKM
<b>1</b>	MATERIALI CORPO: 1 = alluminio
<b>Y</b>	INTERVENTO MANUALE: N = non previsto Y = previsto monostabile
<b>N</b>	ACCESSORI FISSAGGIO: N = non previsti
<b>00</b>	OPZIONI: 00 = nessuna PP = pilotaggio pneumatico PE = elettropilota con pilotaggio esterno
<b>2C</b>	CONNESSIONE ELETTRICA: 2C = connessione tipo KN 90° + protezione + led (Taglia 1) 2F = connessione tipo KN in linea + protezione + led (Taglia 1) 3A = connessione DIN EN 175 301-803-C (8 mm) 4A = connessione standard industriale (9.4 mm) 7A = cavetti - lunghezza 300 mm (Taglia 2 - 3)
<b>C014</b>	TENSIONE - POTENZA ASSORBITA: C012 = 12 V DC 1.3/0.25 W (Taglia 1) C014 = 24 V DC 1.3/0.25 W (Taglia 1) C020 = 12 V DC 2 W (Taglia 2 - 3) C023 = 24 V DC 2 W (Taglia 2 - 3) C025 = 48 V DC 2 W (Taglia 2 - 3)
	VERSIONE: = standard OX1 = per ossigeno (residuo non volatile inferiore a 550 mg/m <sup>2</sup> ) OX2 = per ossigeno (residuo non volatile inferiore a 33 mg/m <sup>2</sup> )

### Valvola pneumatica taglia 1 - 2/2 e 3/2 vie, NC e NO

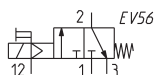
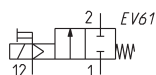
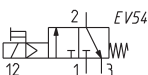
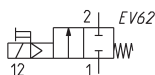


Mod.	Funzione	Connessione pneumatica	Orifizio Ø (mm)	kv (L/min)	Qn (NL/min)	Pressione min= max (bar)	Press. pilotaggio min= max (bar)	Pilotaggio	Simbolo
810C3104-F131N-NPP	2/2 NC (per il funzionamento NO è necessario mantenere un pilotaggio pneumatico in continuo)	G1/8	5.0	6.5	420	0 ÷ 6	3 ÷ 6	Esterno	VP14
810C3404-F131N-NPP	3/2 NC (per il funzionamento NO è necessario mantenere un pilotaggio pneumatico in continuo)	G1/8	5.0	6.5	420	0 ÷ 6	3 ÷ 6	Esterno	YES1

### Elettrovalvola taglia 1, 2/2 e 3/2 vie, NC

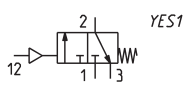
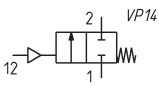
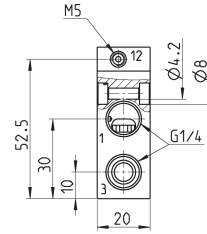
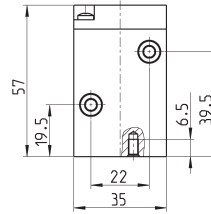
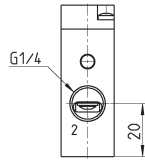
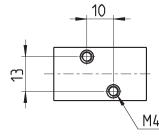


\* per completare il codice aggiungere CONNESSIONE ELETTRICA (opzione 2C o 2F) e TENSIONE (vedere ESEMPIO DI CODIFICA).



Mod.	Funzione	Connessione pneumatica	Orifizio Ø (mm)	kv (L/min)	Qn (NL/min)	Pressione min= max (bar)	Press. pilotaggio min= max (bar)	Pilotaggio	Simbolo
810C3104-F131Y-N00*	2/2 NC	G1/8	5.0	6.5	420	3 ÷ 6	-	Interno	EV62
810C3404-F131Y-N00*	3/2 NC	G1/8	5.0	6.5	420	3 ÷ 6	-	Interno	EV54
810C3104-F131Y-NPE*	2/2 NC	G1/8	5.0	6.5	420	0 ÷ 6	3 ÷ 6	Esterno	EV61
810C3404-F131Y-NPE*	3/2 NC	G1/8	5.0	6.5	420	0 ÷ 6	3 ÷ 6	Esterno	EV56

**Valvola pneumatica taglia 2 - 2/2 e 3/2 vie, NC e NO**

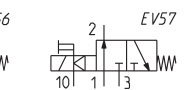
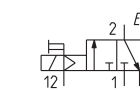
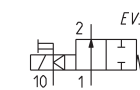
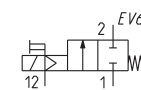
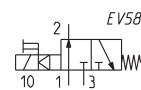
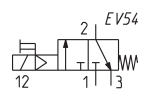
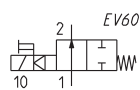
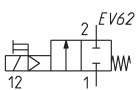
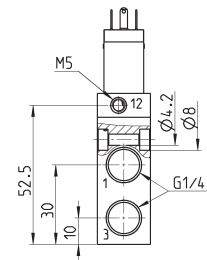
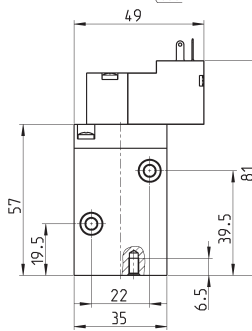
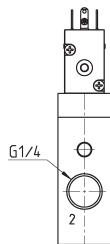
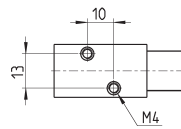


Mod.	Funzione	Connessione pneumatica	Orifizio Ø (mm)	kv (l/min)	Qn (NL/min)	Pressione min÷max (bar)	Press. pilotaggio min÷max (bar)	Pilotaggio	Simbolo
820C3105-G731N-NPP	2/2 NC (per il funzionamento NO è necessario mantenere un pilotaggio pneumatico in continuo)	G1/4	6.6	12.5	800	0 ÷ 6	3 ÷ 6	Esterno	VP14
820C3405-G731N-NPP	3/2 NC (per il funzionamento NO è necessario mantenere un pilotaggio pneumatico in continuo)	G1/4	6.6	12.5	800	0 ÷ 6	3 ÷ 6	Esterno	YES1

**Elettrovalvola taglia 2, 2/2 e 3/2 vie, NC e NO**

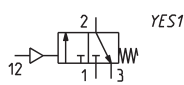
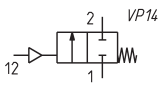
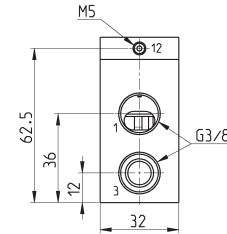
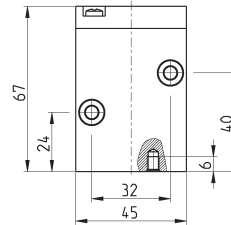
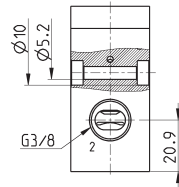
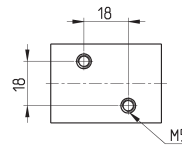


\* per completare il codice aggiungere CONNESSIONE ELETTRICA (opzione 3A, 4A o 7A) e TENSIONE (vedere ESEMPIO DI CODIFICA).



Mod.	Funzione	Connessione pneumatica	Orifizio Ø (mm)	kv (l/min)	Qn (NL/min)	Pressione min÷max (bar)	Press. pilotaggio min÷max (bar)	Pilotaggio	Simbolo
820C3105-G731Y-N00*	2/2 NC	G1/4	6.6	12.5	800	3 ÷ 6	-	Interno	EV62
820C3205-G731Y-N00*	2/2 NO	G1/4	6.6	12.5	800	3 ÷ 6	-	Interno	EV60
820C3405-G731Y-N00*	3/2 NC	G1/4	6.6	12.5	800	3 ÷ 6	-	Interno	EV54
820C3505-G731Y-N00*	3/2 NO	G1/4	6.6	12.5	800	3 ÷ 6	-	Interno	EV58
820C3105-G731Y-NPE*	2/2 NC	G1/4	6.6	12.5	800	0 ÷ 6	3 ÷ 6	Esterno	EV61
820C3205-G731Y-NPE*	2/2 NO	G1/4	6.6	12.5	800	0 ÷ 6	3 ÷ 6	Esterno	EV59
820C3405-G731Y-NPE*	3/2 NC	G1/4	6.6	12.5	800	0 ÷ 6	3 ÷ 6	Esterno	EV56
820C3505-G731Y-NPE*	3/2 NO	G1/4	6.6	12.5	800	0 ÷ 6	3 ÷ 6	Esterno	EV57

## Valvola pneumatica taglia 3 - 2/2 e 3/2 vie, NC e NO

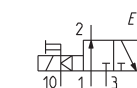
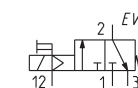
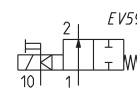
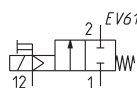
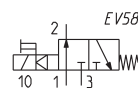
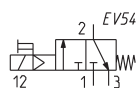
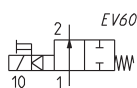
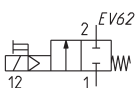
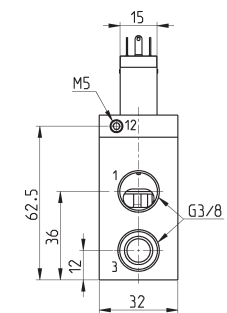
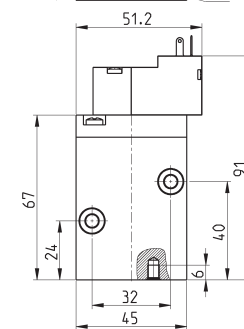
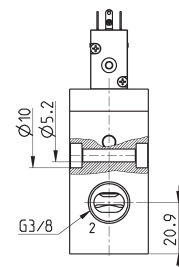
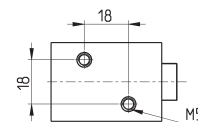


Mod.	Funzione	Connessione pneumatica	Orifizio Ø (mm)	kv (L/min)	Qn (NL/min)	Pressione min÷max (bar)	Press. pilotaggio min÷max (bar)	Pilotaggio	Simbolo
830C3106-K131N-NPP	2/2 NC (per il funzionamento NO è necessario mantenere un pilotaggio pneumatico in continuo)	G3/8	9.0	23	1480	0 ÷ 6	3 ÷ 6	Esterno	VP14
830C3406-K131N-NPP	3/2 NC (per il funzionamento NO è necessario mantenere un pilotaggio pneumatico in continuo)	G3/8	9.0	23	1480	0 ÷ 6	3 ÷ 6	Esterno	YES1

## Elettrovalvola taglia 3, 2/2 e 3/2 vie, NC e NO



\* per completare il codice aggiungere CONNESSIONE ELETTRICA (opzione 3A, 4A o 7A) e TENSIONE (vedere ESEMPIO DI CODIFICA).



Mod.	Funzione	Connessione pneumatica	Orifizio Ø (mm)	kv (L/min)	Qn (NL/min)	Pressione min÷max (bar)	Press. pilotaggio min÷max (bar)	Pilotaggio	Simbolo
830C3106-K131Y-N00*	2/2 NC	G3/8	9.0	23	1480	3 ÷ 6	-	Interno	EV62
830C3206-K131Y-N00*	2/2 NO	G3/8	9.0	23	1480	3 ÷ 6	-	Interno	EV60
830C3406-K131Y-N00*	3/2 NC	G3/8	9.0	23	1480	3 ÷ 6	-	Interno	EV54
830C3506-K131Y-N00*	3/2 NO	G3/8	9.0	23	1480	3 ÷ 6	-	Interno	EV58
830C3106-K131Y-NPE*	2/2 NC	G3/8	9.0	23	1480	0 ÷ 6	3 ÷ 6	Esterno	EV61
830C3206-K131Y-NPE*	2/2 NO	G3/8	9.0	23	1480	0 ÷ 6	3 ÷ 6	Esterno	EV59
830C3406-K131Y-NPE*	3/2 NC	G3/8	9.0	23	1480	0 ÷ 6	3 ÷ 6	Esterno	EV56
830C3506-K131Y-NPE*	3/2 NO	G3/8	9.0	23	1480	0 ÷ 6	3 ÷ 6	Esterno	EV57